



Planungsgesellschaft  
für Energieeffizienz



# WELCOME

---

BODE International



ボーデ設計事務所は、エネルギーと気候保護の分野における皆様の目標を達成するお手伝いをします。具体的には、エネルギー管理システムの導入・運用、建物改修プランの作成、エネルギー消費の継続的な監視などを支援します。最先端のサービス、テクノロジー、専門知識に基づいた、親身で広範なコンサルティング活動を通じて、企業の皆様にとっての価値を創出し、その成果を検証可能とする透明性を確保します。エネルギーコンサルティングは、確かな知見に基づいて独立した専門的なアドバイスを行うための重要なツールです。それによって、一般家庭や企業・自治体におけるエネルギー効率意識を向上し、省エネを実現するためのサポートを行います。

---

Bode Planning Office supports you in achieving your goals in the area of energy and climate protection: We help with the implementation of energy management systems, develop roadmaps for upgrading buildings and enabling the continuous monitoring of your energy consumption. We deliver value to you through our up-to-date services, technology and specialist knowledge with extensive consulting, high engagement and transparent results. Energy consulting is an important tool providing qualified and independent professional advice, which removes obstacles to help recognize and realize energy savings in your home, municipalities or company.



- **headquarter Münster**
- **founded in 2012**
- **19 employees**
- **highly educated staff**
- **wide field of experts**
- **4 loations**

**Bode** Planungsgesellschaft für Energieeffizienz m.b.H.  
[www.bode.ms](http://www.bode.ms) | [info@bode.ms](mailto:info@bode.ms) | +49 - 0251 - 674487-0



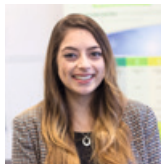
Planungsgesellschaft  
für Energieeffizienz





## commercial customers

- renewable energy supply concepts
- energy management systems
- energy monitoring
- energy efficiency concepts for small and large companies



## Our Fields...

### municipal customers

- refurbishment concepts for buildings
- energy consulting for new and existing buildings
- climate protection concepts
- district heating





## private customers

- energy performance certificates
- energy efficiency consulting
- construction supervision
- assistance in applying for subsidies



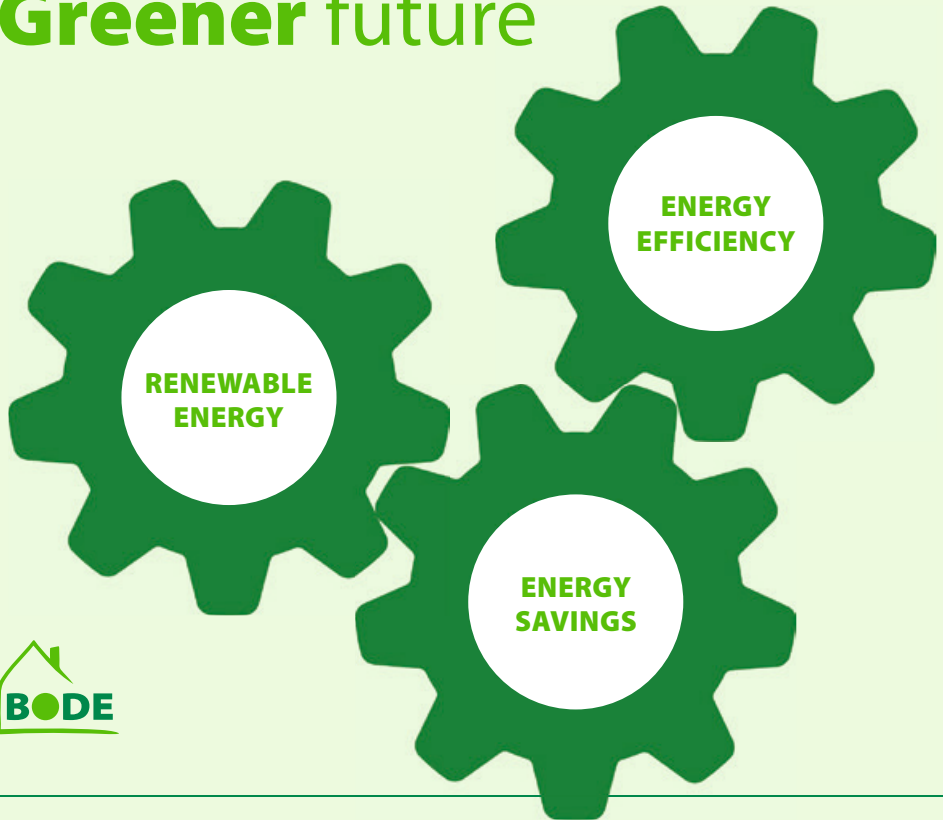
# ...of Activity

## building services engineering

- energy supply (gas, electricity, etc.)
- heating, ventilation, air conditioning
- water, drainage, plumbing
- building information modelling...



# Three Steps towards a Greener future

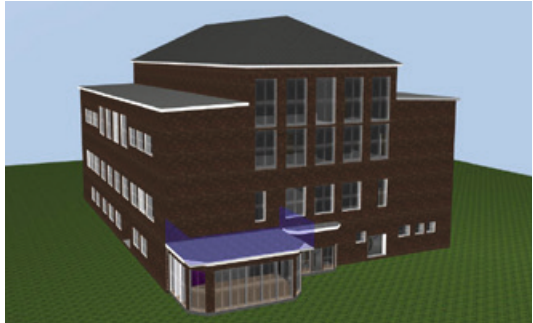




# 3D Modelling and **Simulations**

---

Municipal  
Building



# Building **Analyses**

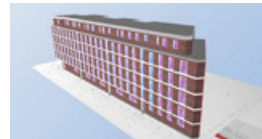
---

## 3D-Modelling and housing analyses (DIN V 18599)



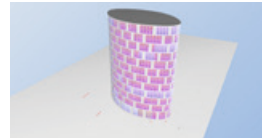
### **residential buildings**

- family homes
- apartment buildings



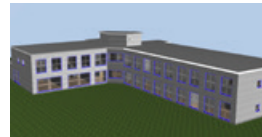
### **commercial buildings**

- factories
- offices
- trade



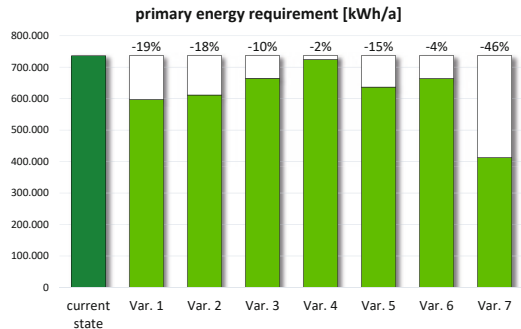
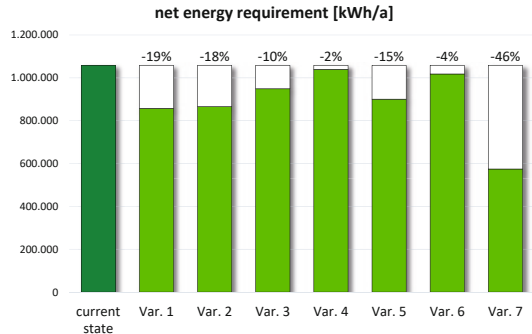
### **public institutions**

- schools
- administrative buildings



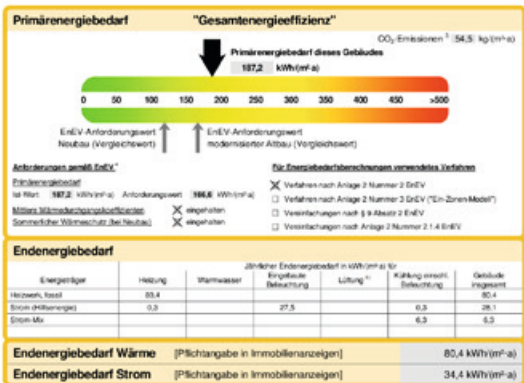
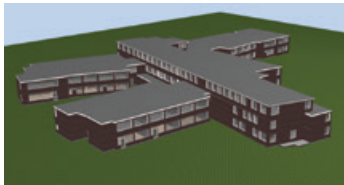
# Energy-saving measures

- Var. 1: roof
- Var. 2: exterior walls
- Var. 3: window
- Var. 4: basement ceiling
- Var. 5: optimisation of heating system
- Var. 6: photovoltaics
- Var. 7: state of the art (combination of variants)



# Energy performance certificate

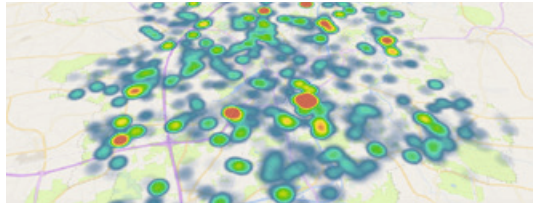
1. mandatory in Germany for selling and rent
2. benchmark of your building
3. recommendations for optimization



# Energy Audit (DIN EN 16247-1)

---

- audit reports
- energy flows
- monitoring



# Making **Energy** loss visible

---

together



independent



renewables



customized solutions



simple data evaluation



money savings



# Aims

hand in hand with efficient solutions in a world worth living in

- „keep the focus on your business and we handle your energy“
- „learning from eachother“
- „act instead of talk“



# Partners



Stadtwerke Münster



**VIESSMANN**

**Panasonic**

# References



Planungsgesellschaft  
für Energieeffizienz

## BODE INTERNATIONAL



**Marcel Stueer**

Business Unit Manager  
Commercial Customers



**Jan Ortmann**

Business Unit Manager  
Municipal Customers

**BODE** Planungsgesellschaft  
für Energieeffizienz m.b.H.

[www.bode.ms](http://www.bode.ms)

✉ [info@bode.ms](mailto:info@bode.ms)

☎ +49 (0)251 674487-0

📍 Kesslerweg 20  
48155 Münster, Germany